



BLUEPRINTS & CO.
P R O P E R T I E S

Sales - Lettings - Management - Mortgages



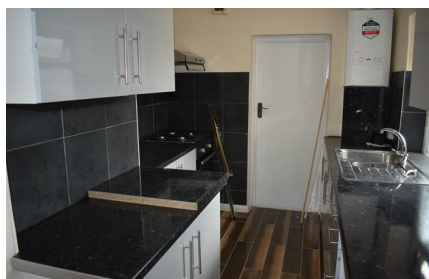
Newlyn Road

, London, N17 6RX

£600



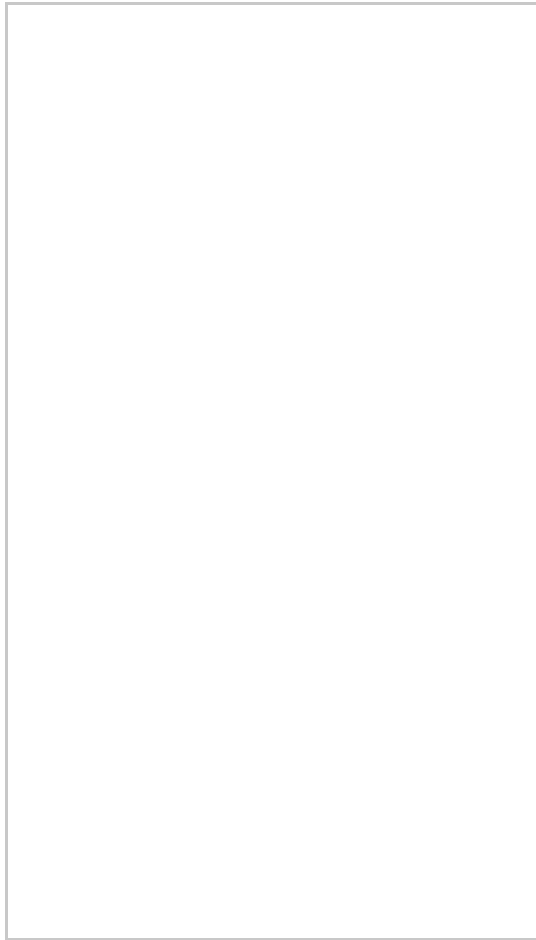
All Bills IncludedBlueprints & Co Properties are excited to present you with this spacious double room shared accommodation located in Tottenham N17 on Newlyn Road, this property is perfect for those who are a couple or an individual looking for a cosy place to stay. These rooms are spacious and airy and newly refurbished floors. This property offers easy access to the local shops and bruce grove station within walking distance.



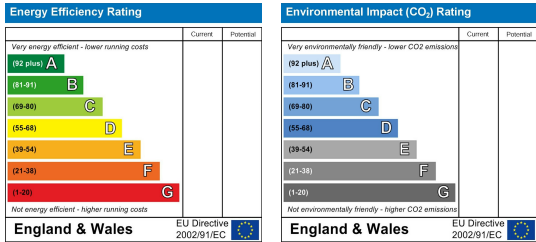
Area Map



Floor Plans



Energy Efficiency Graph



These particulars, whilst believed to be accurate are set out as a general outline only for guidance and do not constitute any part of an offer or contract. Intending purchasers should not rely on them as statements of representation of fact, but must satisfy themselves by inspection or otherwise as to their accuracy. No person in this firm's employment has the authority to make or give any representation or warranty in respect of the property.